



Bartlams

2 Ash Grove, Albrighton, WV7 3QU

Offers in the Region Of £210,000

This charming Shropshire Village home impresses with its attractive mid-terrace layout and high-quality presentation. The entrance welcomes you with elegant marble flooring, leading to the living room featuring double glazed windows, a green view, and a door to the dining room. The dining room boasts wood-effect laminate flooring, double doors to the rear garden, and a beautifully equipped kitchen with quartz countertops, an AEG induction hob, and integrated appliances. Upstairs, a landing connects to two bedrooms, each with ample natural light and storage. The modern shower room includes a double shower tray, storage-equipped wash basin, and a toilet. Outside, the rear of the property offers a paved patio, raised decking, and convenient access to the front via a gated entrance.

- MODERN TWO BEDROOM HOME.
- POPULAR VILLAGE LOCATION.
- DOUBLE GLAZING AND CENTRAL HEATING.
 - GREEN VIEWS TO THE FORE.
- MODERN KITCHEN AND BATHROOM.
 - ENCLOSED PAVED REAR GARDEN.
 - IDEAL FIRST TIME PURCHASE.
- LIVING ROOM AND SITTING/DINING ROOM.

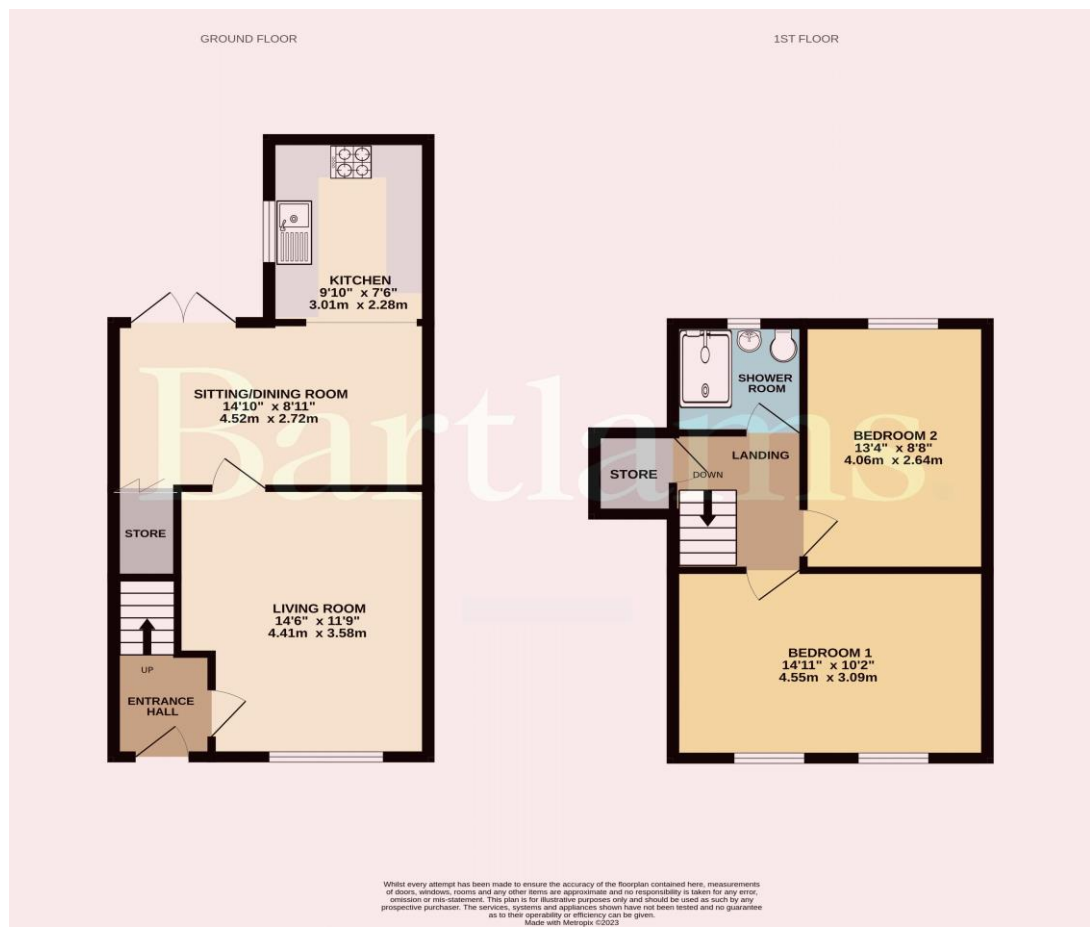


Freehold
COUNCIL TAX BAND -
EPC RATING -

NOTICE: These particulars, although believed to be correct, do not constitute any part of an offer or contract. All statements contained in these particulars as to this property are made without responsibility and are not to be relied upon as statements or representations of warranty whatsoever in relation to property. Any intending purchaser must satisfy themselves by inspection or otherwise as to the correctness each of the statements contained in these particulars. All measurements are approximate and for illustrative purposes only. Photographs are produced for general information and it must not be inferred that any item shown is included in the sale.

DISCLOSURE: As a professional Estate Agency our clients employ us to look after their best interests. This includes providing them with full details of offers made to purchase their property. To ensure our obligations to our clients are met we need to check the status of all potential purchasers. If you make an offer on this property we will ask a member of The Finance Family to contact you to verify your status. They are a leading firm of Independent Financial Advisers and Mortgage Brokers. Should they transact any business resulting from our introduction then we may receive a commission.

Bartlams



PLEASE SIGN BELOW TO AGREE THAT THE DETAILS ARE ACCURATE TO THE BEST OF YOUR KNOWLEDGE

SIGNED:

DATE:

24 High Street TETTENHALL Wolverhampton West Midlands WV6 8QT

01902 759888

tettenhallsales@bartlams.co.uk

www.bartlams.co.uk



